



CERTIFICATE IV IN EDUCATION SUPPORT

Teacher Aide
Course



COURSE OUTLINE

LEARN

ADAPT

SUCCEED

COURSE OVERVIEW

Welcome to Adapt Education!

This course is suitable if you are currently working as or seeking to work as a teacher aide in a primary, secondary or special needs school. This Nationally Recognised course consists of 17 units:

CHC40213 Certificate IV in Education Support

CHCECE006 Support behaviour of children and young people

CHCEDS001 Comply with legislative, policy and industrial requirements in the education environment

CHCPR001 Identify and respond to children and young people at risk

CHCEDS004 Contribute to organisation and management of classroom or centre

CHCDIV001 Work with diverse people

CHCDIV002 Promote Aboriginal and/or Torres Strait Islander cultural safety

CHCEDS032 Support learning and implementation of responsible behaviour

CHCDIS004 Communicate using augmentative and alternative communication strategies (E)

CHCEDS006 Support the development of numeracy skills

CHCEDS021 Assist in facilitation of student learning

CHCEDS022 Work with students in need of additional support

CHCEDS024 Use educational strategies to support Aboriginal and/or Torres Strait Islander education

CHCEDS025 Facilitate learning for students with disabilities

HLTWHS001 Participate in work health and safety

CHCEDS020 Support students' literacy learning (E)

CHCEDS031 Provide support to students with autism spectrum disorder (E)

CHCPR003 Reflect on and improve own professional practice

Alternate Elective units (E) may be available. Please discuss with an enrolment officer.

ENTRY REQUIREMENTS

While not mandatory, you should have completed a Certificate III or higher level qualification OR have experience in education or child related employment. It is expected that students have well developed written and verbal communication skills, basic numeracy skills and basic computer operating skills. A working with children check (also known as a blue card in Qld) must be obtained prior to conducting your vocational placement. Refer back to our website for links to each State or Territory agency responsible for administering working with children checks.

STUDY MODE

Self-paced study means that you can study at times and locations that suit you. No assessment due dates and no timetabled lectures or webinars. Fast track your study or take your time – the choice is yours.

Classroom study provides a structured 20 week program (2 days per week). This mode has all the perks of self-paced study plus face-to-face sessions with your trainer. Classroom locations include: Brisbane & Gold Coast. Please talk to a staff member for current locations and dates.

DURATION

You will have up to 2 years to complete but can progress at any pace. Classroom based students may complete in the allocated 20 week block but will have up to 2 years to complete. As a guide someone spending 8hrs per week on assessment, could expect to complete the course in approximately 9 - 12 months. Students receiving study benefits from Centrelink (education supplement) will be obligated to complete the course in: 53 weeks (full time) or 89 weeks (part time).



www.adapteducation.com.au

1300 380 335

LEARN

ADAPT

SUCCEED

ONLINE OR CORRESPONDENCE?

For the theory component of your course, you may choose:

- Online: benefit from an easy to navigate elearning course. The online course is interactive, meaning less readings and more visually engaging resources.
- Correspondence: receive course resources in a hardcopy format. Resources are presented in a student portfolio for easy management. Assessment is provided on a USB stick.

PRACTICAL

Students not currently working in the education support industry will be required to complete 100 hours practical placement as part of their study. You may choose to do your placement as a full time block or part time. The placement can be completed at any stage during your course. Adapt Education can arrange your placement for you or you can arrange your own. Additional hours (up to 100hrs) may be required for school based students, students on a traineeship, Early School leavers or those that have been assessed as having limited work/life experience. This will enable more time to develop skills in a work setting.

GOVERNMENT FUNDING

This course is approved for funding through the following agencies/programs:

- Higher Level Skills Subsidy (eligible QLD residents only)
- Centrelink (Education Supplement)

Contact us and we will let you know if you or your employer may attract funding.

Higher Level Skills Subsidy

To be eligible for this subsidy you must:

- Be aged 15 years or above and no longer be at school
- Permanently reside in Queensland
- Be an Australian citizen or New Zealand citizen or Australian permanent resident (including those with a visa on the pathway to permanent residency).
- Not hold or be currently enrolled in a Certificate IV or higher level qualification (Does not include qualifications completed at school or abroad)

Students approved for the Higher Level Skills Subsidy will pay a student contribution fee. Concession card holders, Aboriginal or Torres Strait Islander people and will receive a concession.

PAYMENT

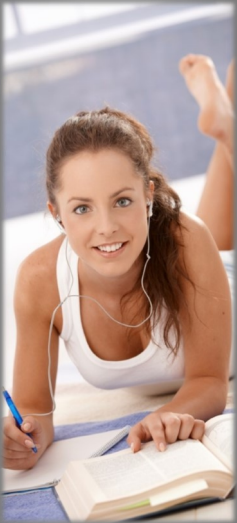
Payment plans are offered with no additional fees or charges. You can nominate the instalment amount and frequency you are comfortable with.

CHC40213 Certificate IV in Education Support	Non-Concessional	Concessional
Standard course fee	\$2,500	\$2,500
For students who qualify for the Higher Level Skills Subsidy		
Standard Student contribution fee	\$500	\$400
Student contribution fee - Group (4 - 10 students)	\$100	\$50
Student contribution fee - Group (11+ students)	\$40	\$25

- Price quoted is for self-paced and classroom based training
- Enrolments cannot be accepted from international students or those in Australia on a student or education visa.
- Additional fees apply if you are completing the first aid unit as part of your course.

www.adapteducation.com.au

1300 380 335



LEARN

ADAPT

SUCCEED

HOW TO ENROL

Read the Student Handbook and this Course Outline before you enrol:

1. Go to adapteducation.com.au/enrol-now to complete your enrolment online; OR
2. Call us on 1300 380 335 to enrol over the phone

COURSE COMMENCEMENT

Upon receipt of your enrolment form an Adapt Education staff member will contact you to conduct a pre-enrolment interview and to confirm your enrolment.

COURSE INDUCTION

All Adapt Education students will receive a course induction. Inductions may be completed face-to-face, on Skype, or over the phone. During your induction, your trainer will: take time to explain how to navigate your course resources and assessments; and provide you with some guidance on the depth and content expected in some of the different assessments.

STUDENT SUPPORT

Regardless of the study mode you select, you will have unlimited access to your trainer through phone, email and instant messaging. We pride ourselves on having quick response times to every query. Delivery and assessment of this course can be customised. Please discuss your options with Adapt to ensure that we have created the course that best suits you.

ASSESSMENT

Your assessment consists of two key areas:

- Theory assessment: text activities, written questions, projects, evidence portfolios.
- Practical assessment: includes demonstration of your skills in the workplace. Recorded as observations by your supervisor, practical placement person or trainer.

FIRST AID

You have the option of selecting HLTAID003 Provide first aid as an elective unit within this course. If selecting HLTAID003 Provide first aid as an elective:

- The cost of the first aid unit is not included in Adapt Education's course fee. You will need to pay the listed course fee to your selected first aid provider.
- Ensure that you are booking into a first aid course that includes the nationally recognised unit HLTAID003 Provide First Aid.
- Provide a copy of your Statement of Attainment to Adapt in order to receive a credit.

COURSE COMPLETION

On successful completion of all course requirements you will be issued a Nationally Recognised Certificate IV in Education Support (CHC40213). All students completing or discontinuing their studies will be required to complete a student survey.

ADAPT EDUCATION RTO # 32452 | PO Box 5830 Manly QLD 4179 | info@adapteducation.com.au

www.adapteducation.com.au

1300 380 335

